

Learn the Signs. Act Early.

The journey of your child's early years includes many developmental milestones for how he or she plays. To learn what to look for in your child, talk with your child's doctor about these milestones.

Not reaching these milestones, or reaching them much later than other children, could be a sign of a developmental delay.

If you have concerns about your child's development and live within Fresno, Kings, Madera, Mariposa, Merced, or Tulare counties, here is who you can call for further support:

Central Valley Regional Center

Fresno Office (559) 276-4300
Visalia Office (559) 738-2200
Merced Office (209) 723-4245
www.cvrc.org

Family Resource Centers

- Fresno County -

Clovis Unified FRC (Clovis Unified residents only)

(559) 327-8455 • www.tinyurl.com/Clovisfrcpage

Exceptional Parents Unlimited

(559) 229-2000 • www.epuchildren.org

Help Me Grow Fresno County

1(866) 543-7464 • www.helpmegrow.fcoe.org



Centers for Disease
Control and Prevention
www.cdc.gov/ActEarly
1-800-CDC-INFO

Family Resource Centers

- Kings County -

UCP (United Cerebral Palsy) of Central California

559-584-1551 • ucpcc.org

- Madera County -

Early Start Family Resource Center (559) 662-4844

- Mariposa County -

Mariposa Family Resource Center (209) 966-6299

- Merced County -

CHALLENGED Family Resource Center

(209) 385-5314 • challengedfrc.org

Children's Roundtable

(209) 381-6665 • roundtable@mcoe.org

- Tulare County -

Parenting Network Inc.

(559) 625-0384 • parentingnetwork.org

Special Education Local Plan Areas (SELPA)

Clovis Unified SELPA

(559) 327-9400 • <https://www.cusd.com/SpecialEducation.aspx>

Fresno County SELPA

(559) 497-3880 • selpa.fcoe.org/

Fresno Unified SELPA

(559) 457-3220 • fresnounified.org/dept/specialeducation

Kings County SELPA

(559) 589-2650 • kings.k12.ca.us/SELPA/default.aspx

Madera-Mariposa SELPA

(559) 662-4665 • www.maderacoe.k12.ca.us/student_programs

Merced County SELPA

(209) 381-6711 • mcoe.org/deptprog/SPED/Pages/SELPA.aspx

Tulare County SELPA

(559) 730-2910 x 5125
tcoe.org/Special/ChildFind.shtm

Track Your Child's Developmental Milestones

For parents of children from birth to 5 years



Learn the Signs. Act Early.

Your child's early development is a journey. Use this map of milestones to know what to look for along the way.

This brochure developed and provided by

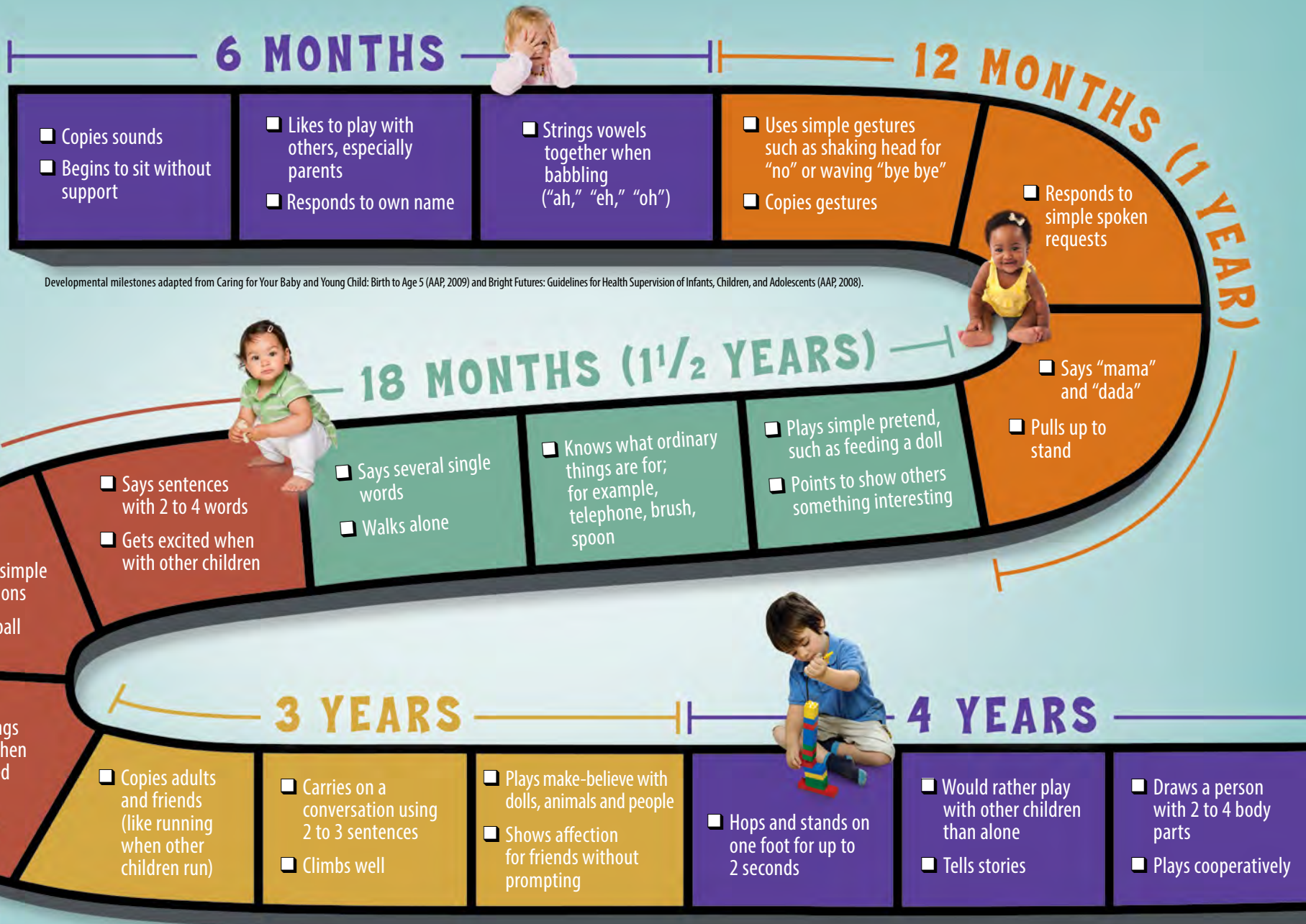


www.captain.ca.gov



Your Child's Early Development is a Journey

Check off the milestones your child has reached and share your child's progress with the doctor at every visit.



Developmental milestones adapted from Caring for Your Baby and Young Child: Birth to Age 5 (AAP, 2009) and Bright Futures: Guidelines for Health Supervision of Infants, Children, and Adolescents (AAP, 2008).

These are just a few of many important milestones to look for. For more complete checklists by age visit www.cdc.gov/ActEarly or call 1-800-CDC-INFO.